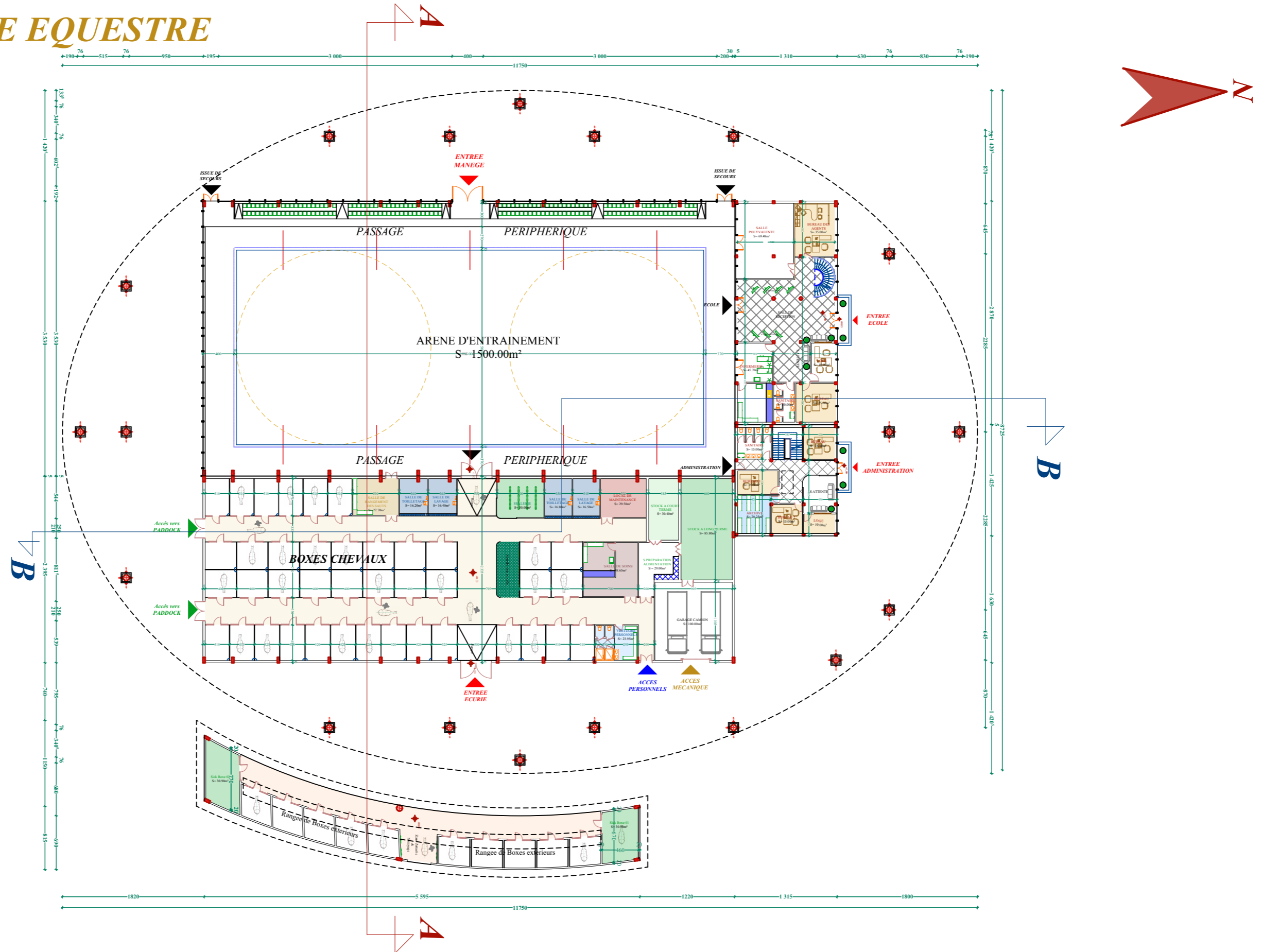
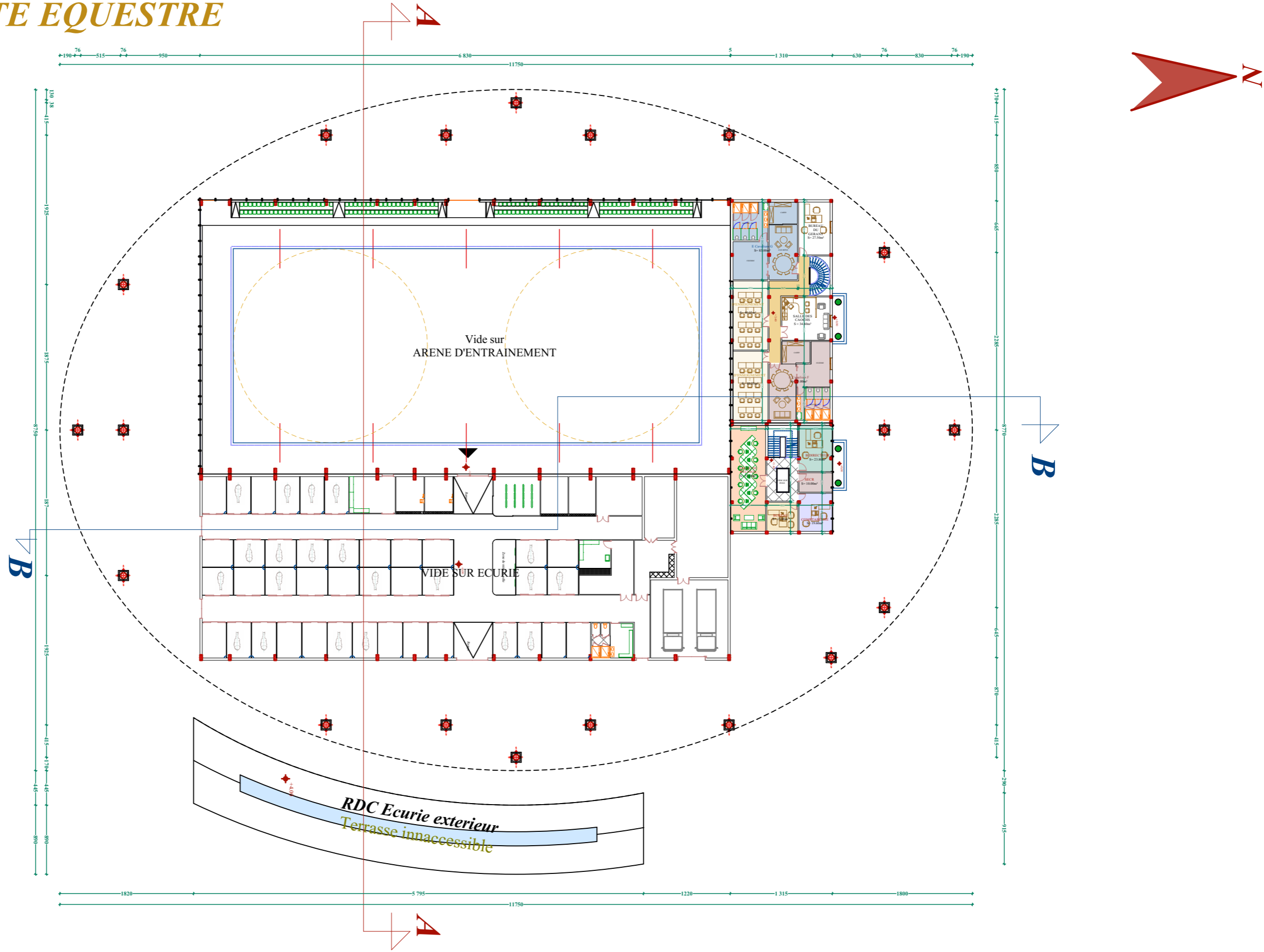


PLANS ENTITE EQUESTRE

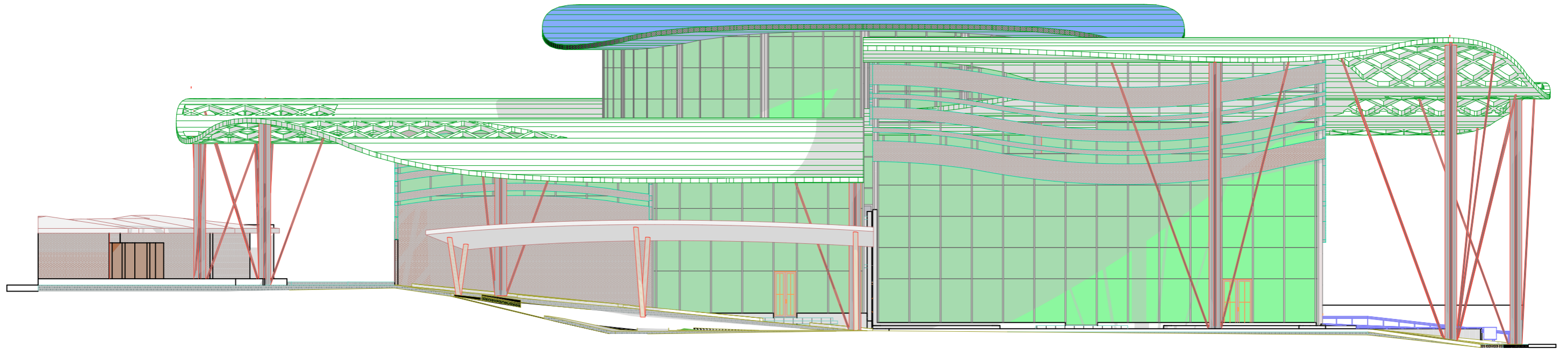


PLAN REZ DE CHAUSSEE
Ech : 1/500

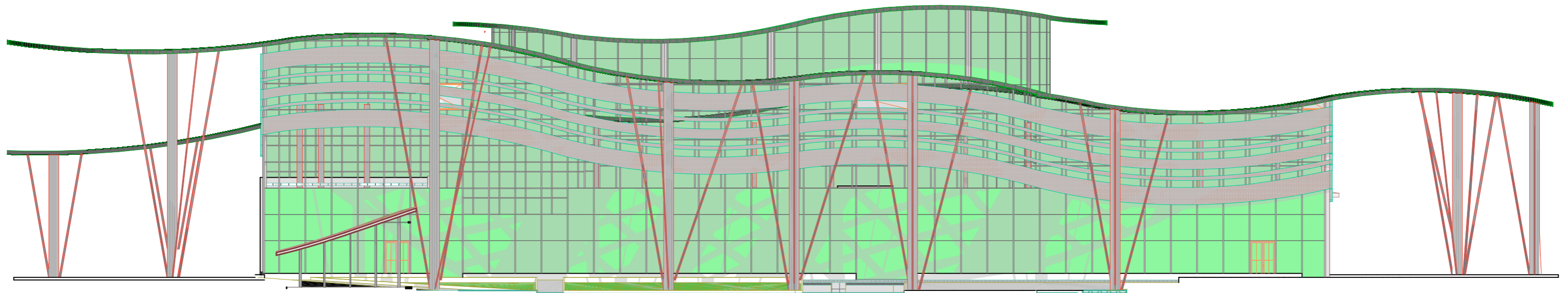
PLANS ENTITE EQUESTRE



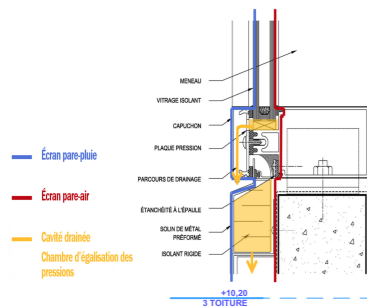
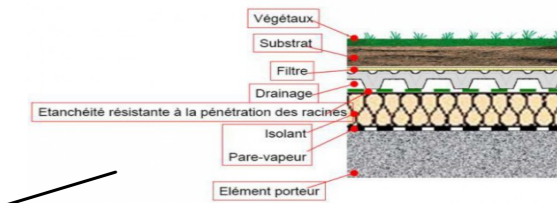
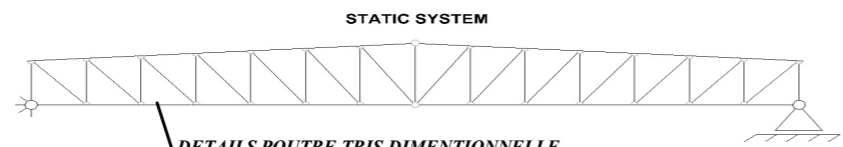
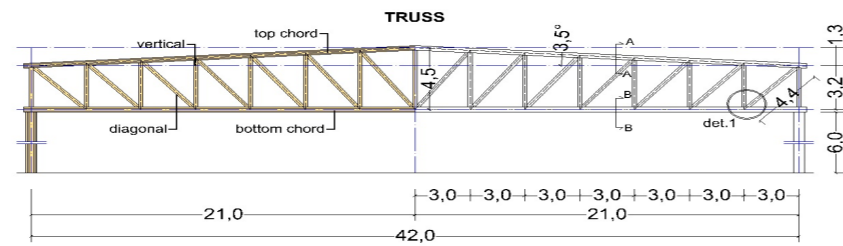
PLAN 1ER ETAGE
Ech : 1/500



FACADE PRINCIPALE
Ech : 1/200



FACADE LATERALE
Ech : 1/200



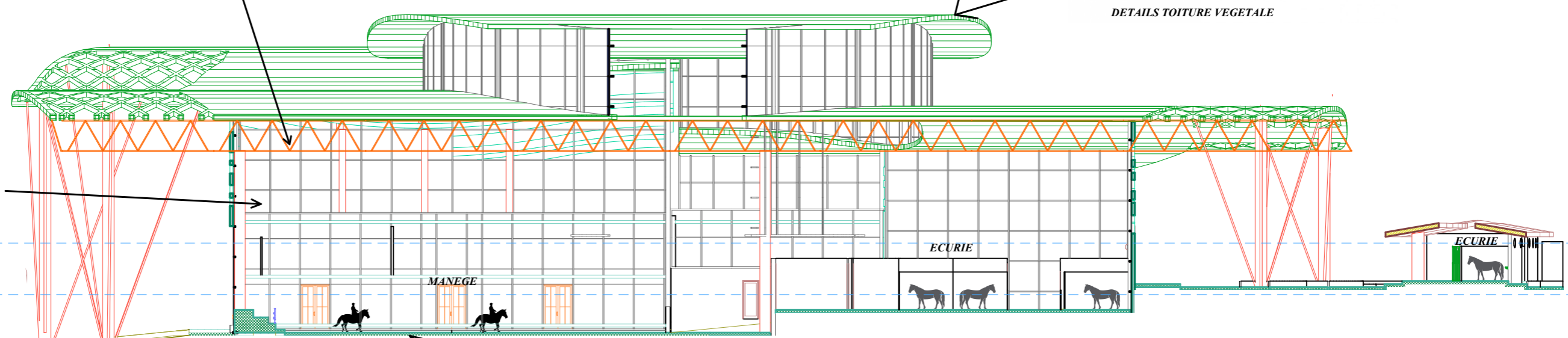
DETAILS MUR RIDEAU

+10.20
3 TOITURE

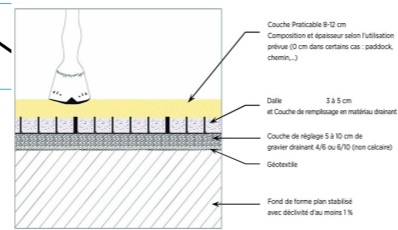
+6.80
2 2EME ETAGE

+3.40
1 1ER ETAGE

±0.00
0 RDC

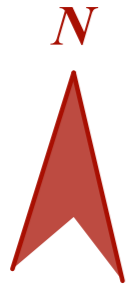


DETAILS SOL MANEGE



COUPE AA
Ech : 1/200

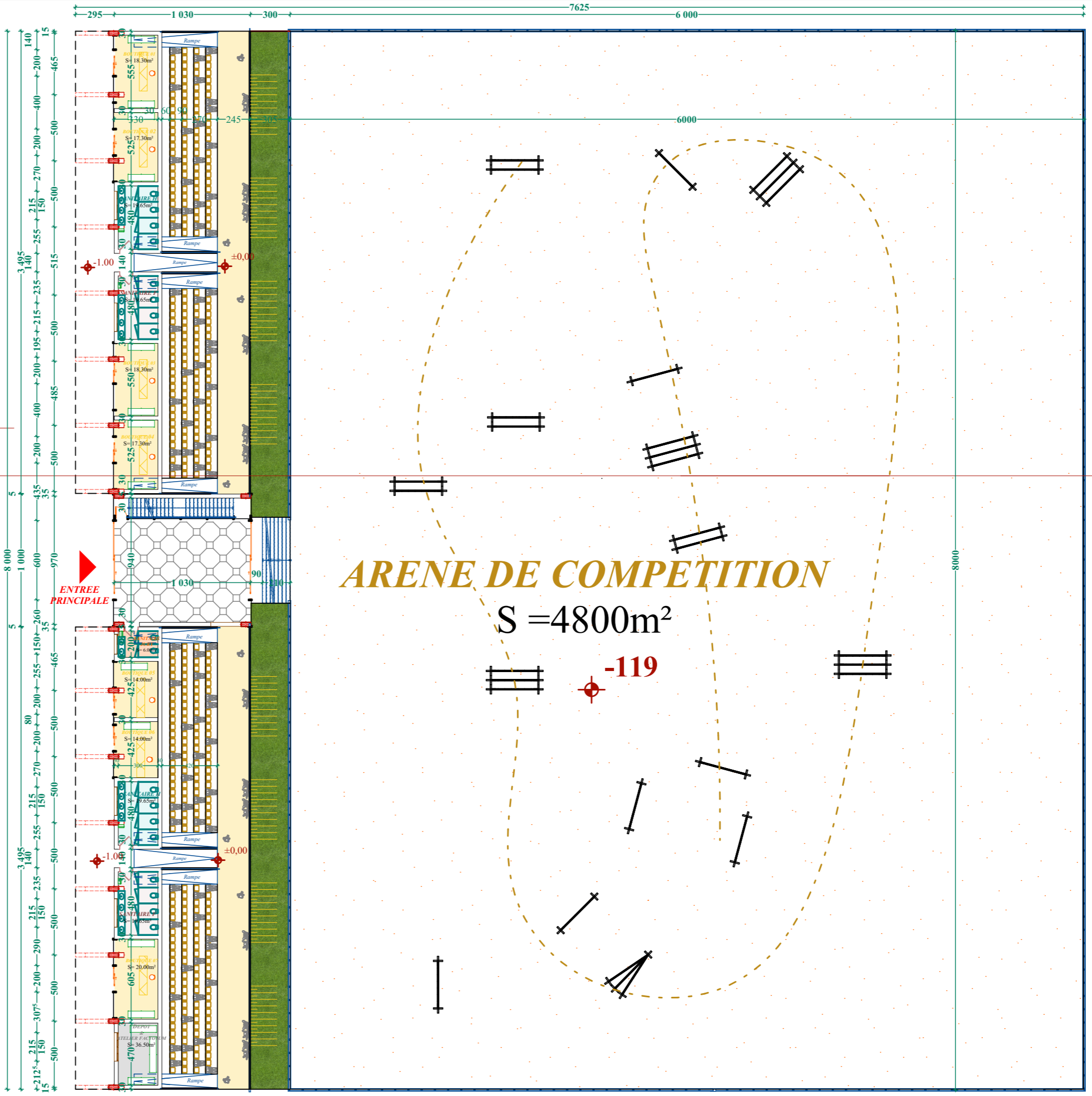
PLANS TRIBUNES + ARENE DE COMPETITION



ARENE DE COMPETITION

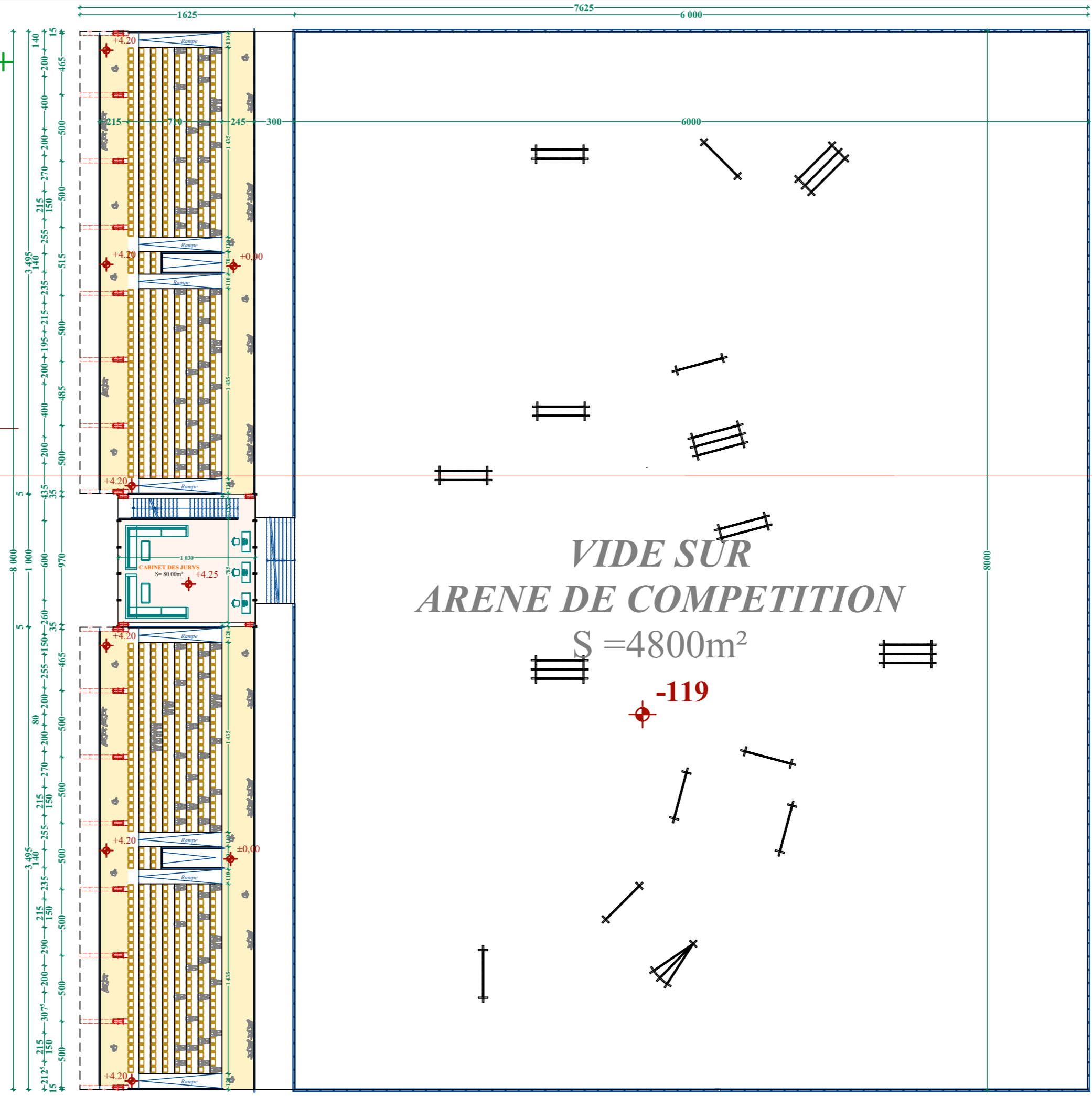
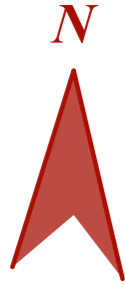
$S = 4800m^2$

-119



PLAN REZ DE CHAUSSE
Ech : 1/200

PLANS TRIBUNES + ARENE DE COMPETITION



PLAN 1er ETAGE
Ech : 1/200

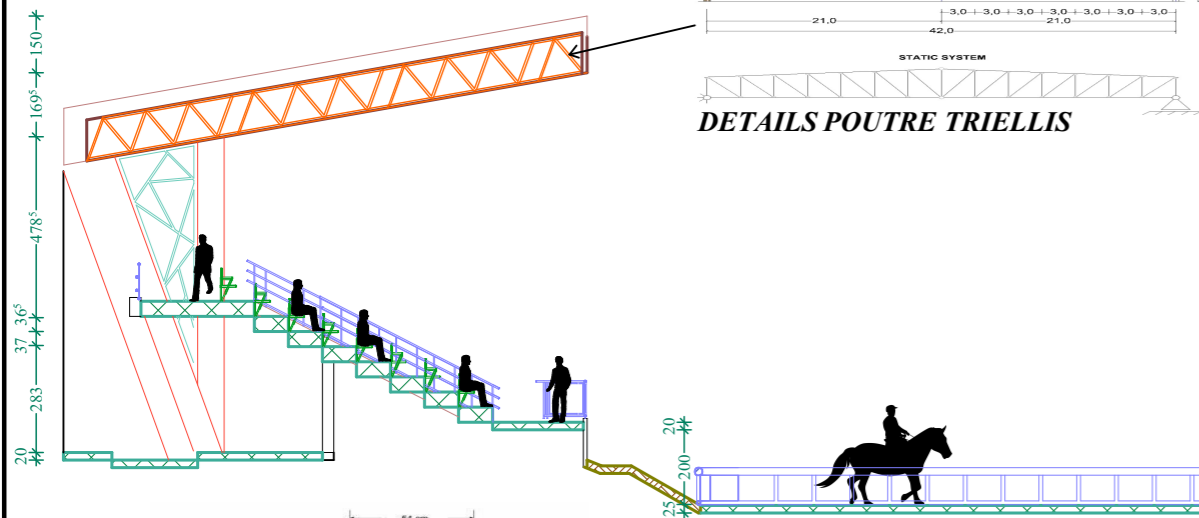


FACADE PRINCIPALE

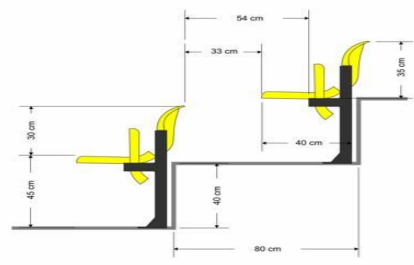
Ech : 1/200



VUE SUR ACCES PRINCIPAL DES TRIBUNES



DETAILS POUTRE TRIELLIS



NORMES TRIBUNES



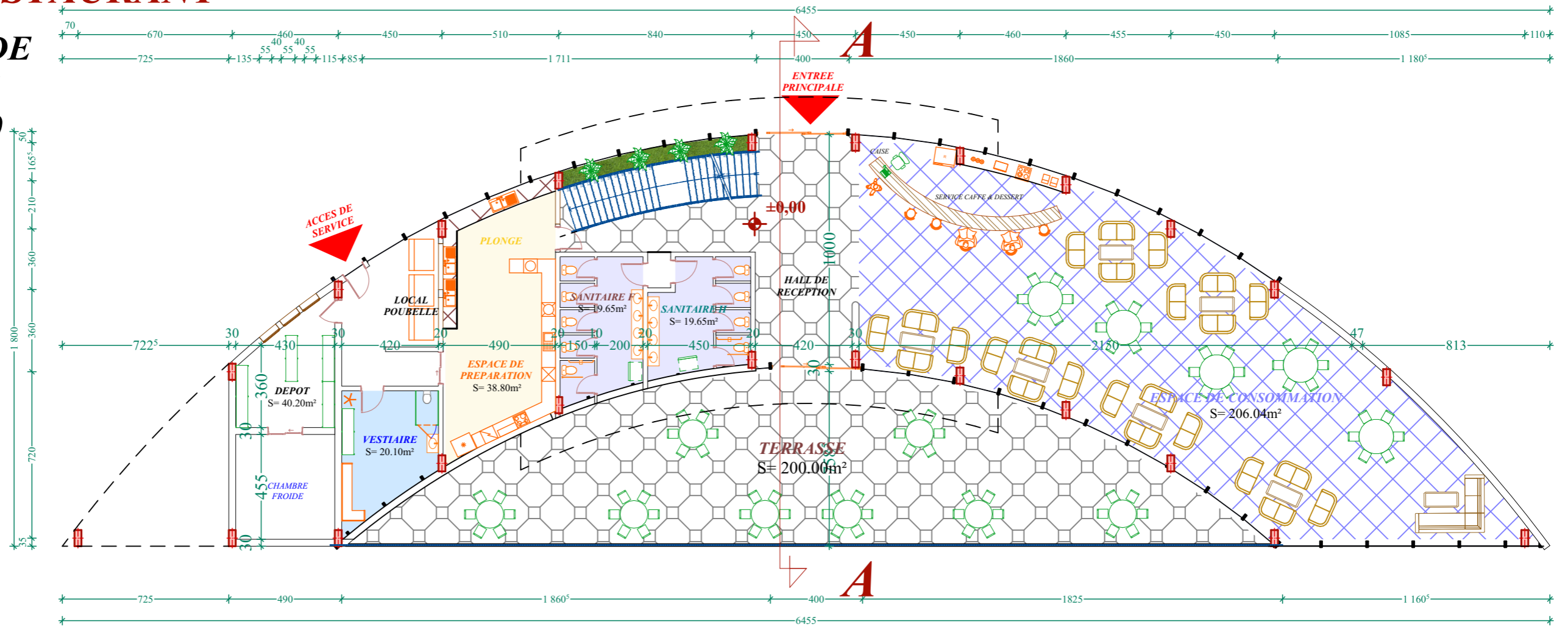
DETAILS SOL CARRIERE EXTERIEUR

COUPE AA

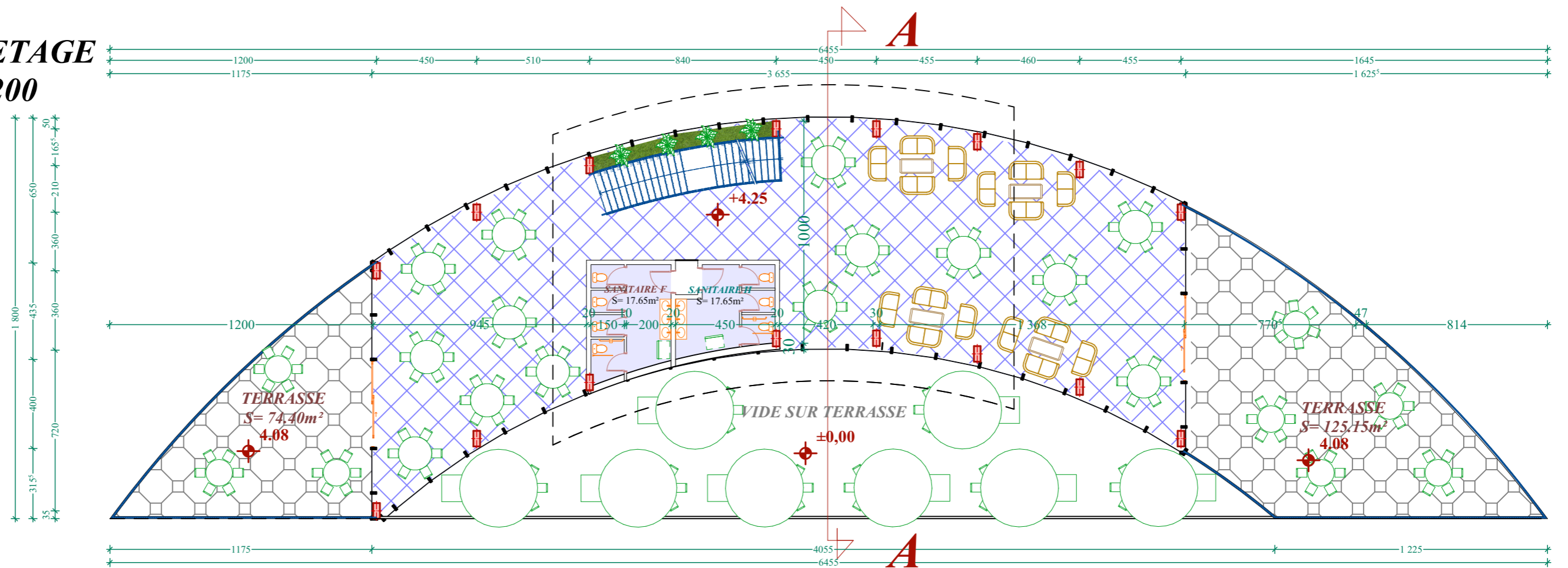
Ech : 1/200

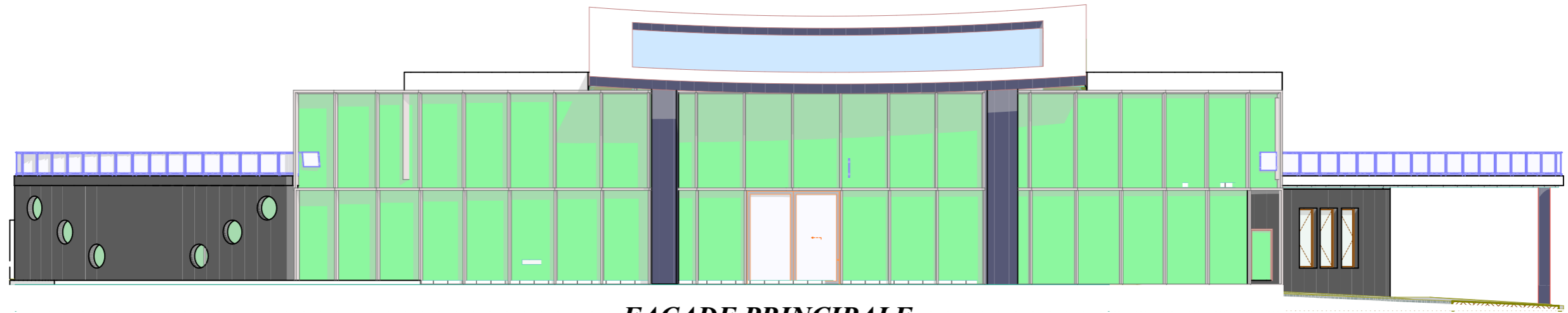
PLANS RESTAURANT

PLAN REZ DE CHAUSSE Ech : 1/200

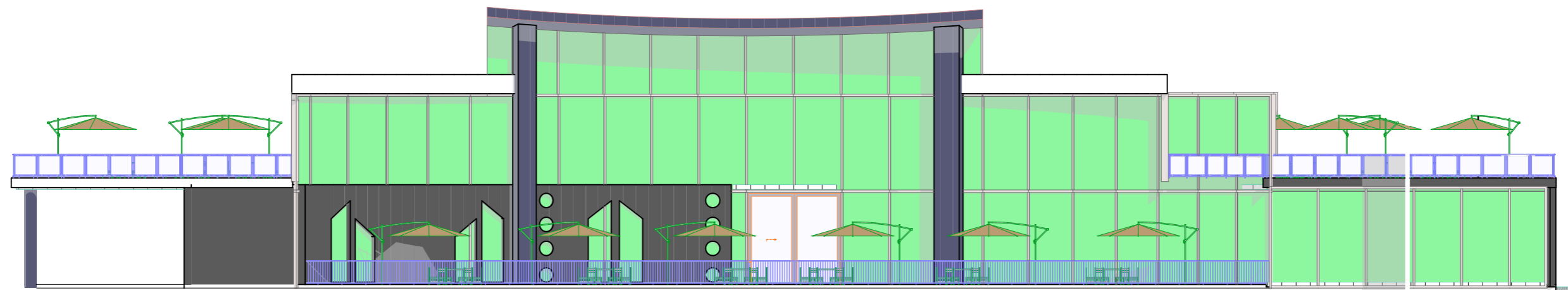


PLAN 1ER ETAGE Ech : 1/200

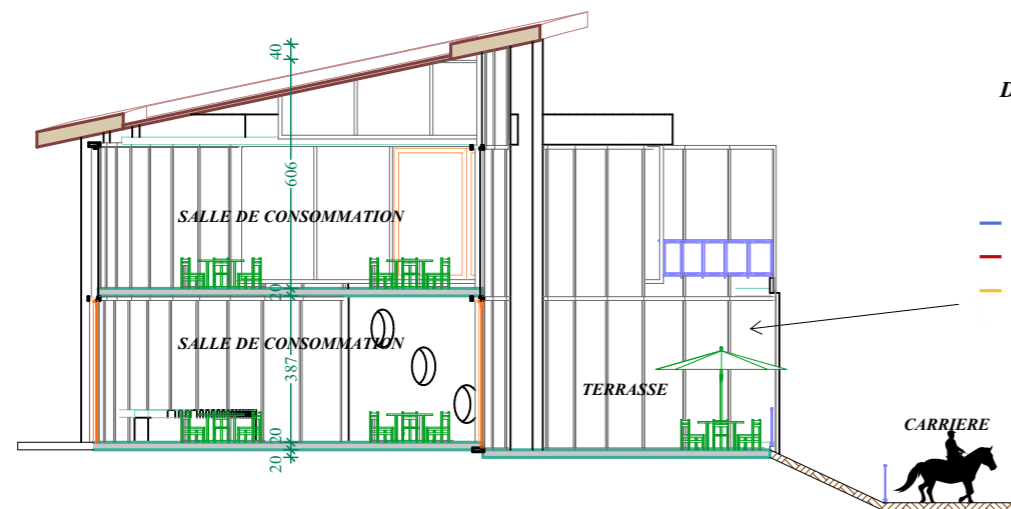




FACADE PRINCIPALE
Ech : 1/200

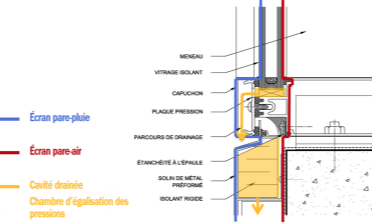


FACADE SECONDAIRE
Ech : 1/200



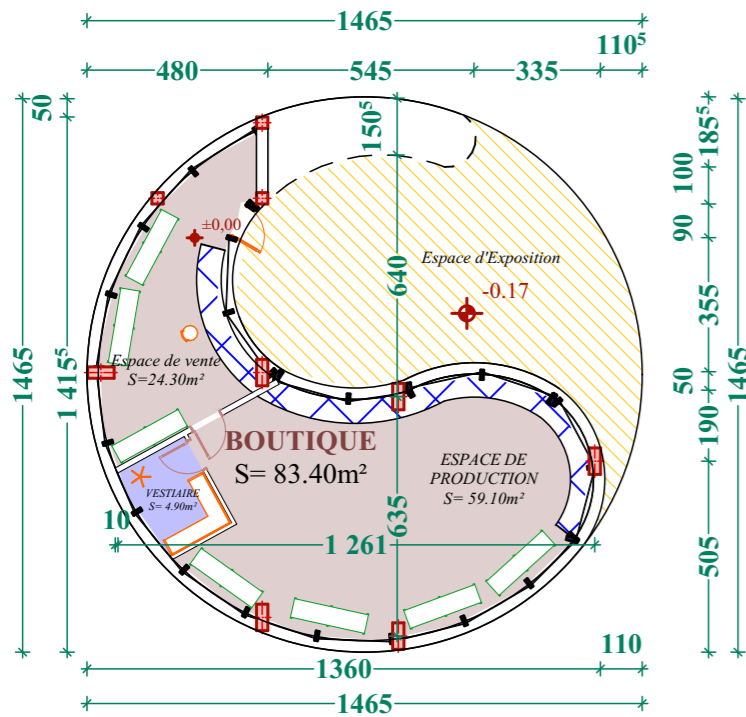
COUPE AA
Ech : 1/200

DETAILS MUR RIDEAU

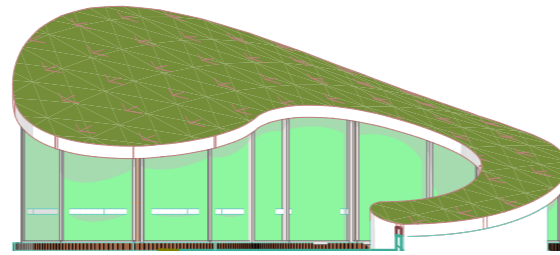


VUE SUR RESTAURANT

PLANS BOUTIQUE

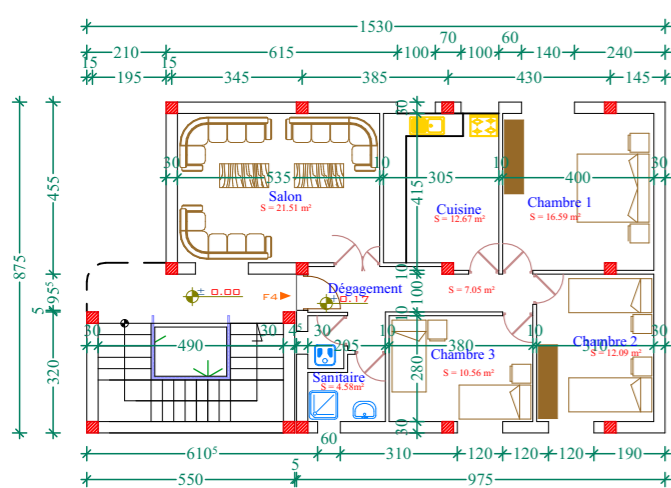


PLAN REZ DE CHAUSSE
Ech : 1/200

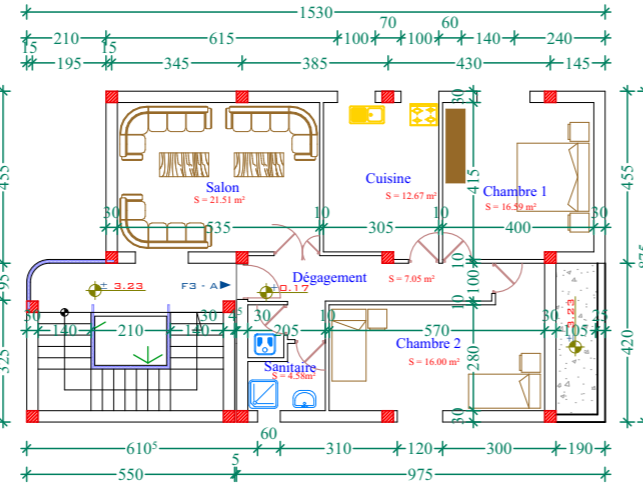


FACADE PRINCIPALE
Ech : 1/200

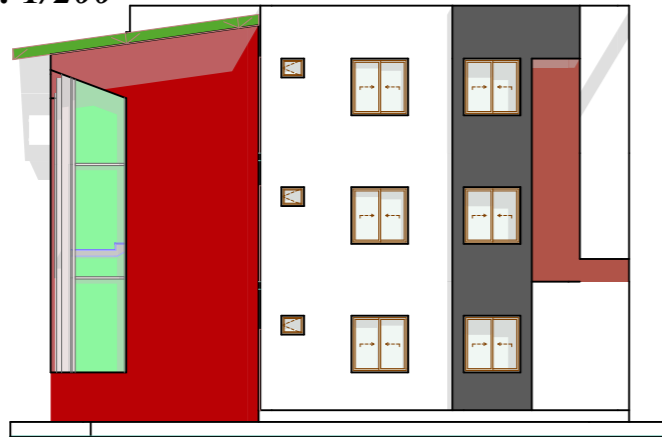
PLANS LOGEMENTS DE FONCTION



PLAN REZ DE CHAUSSEE
Ech : 1/200



PLAN 1ER ETAGE
Ech : 1/200



FACADE PRINCIPALE
Ech : 1/200

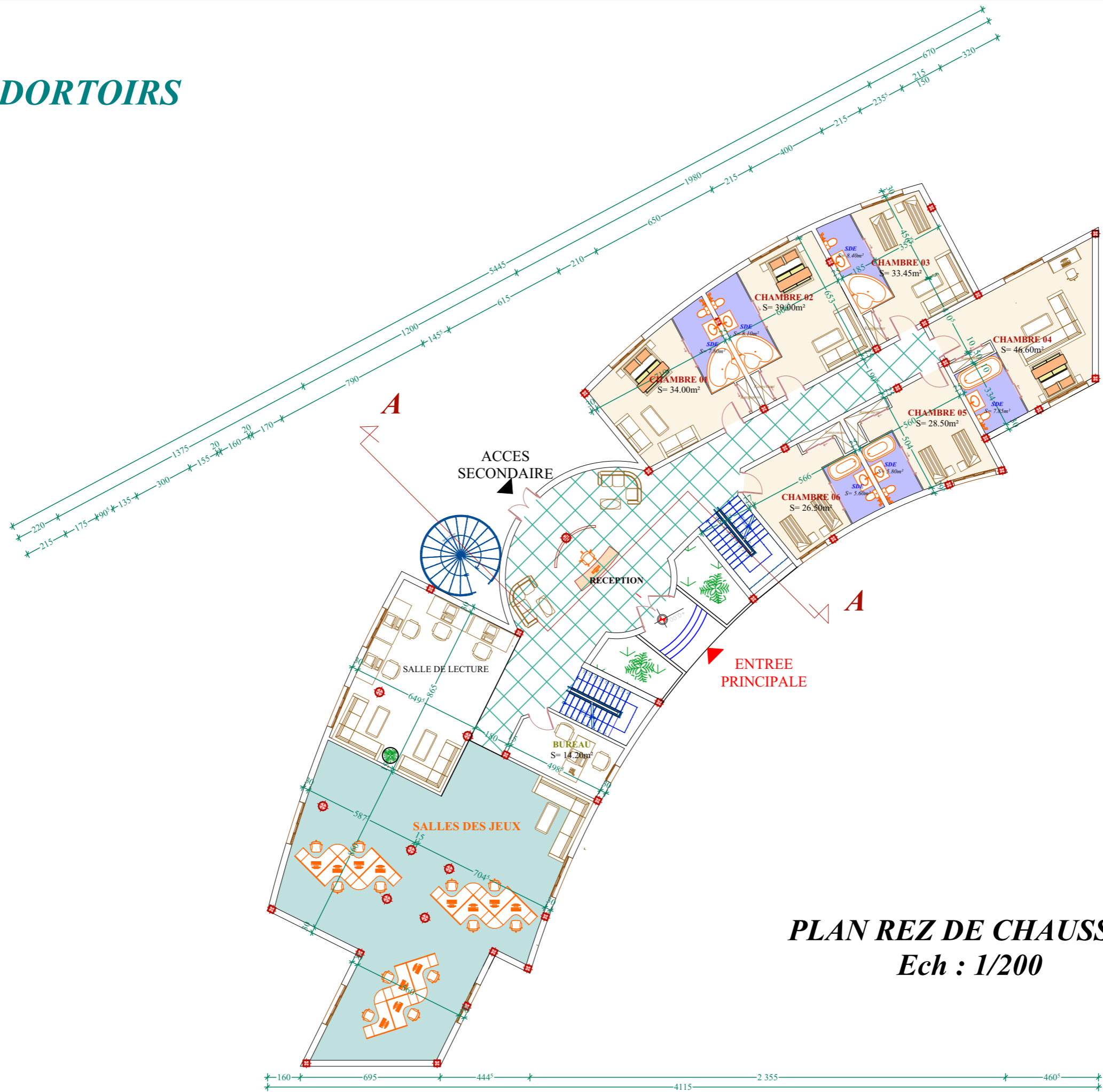


VUE SUR BOUTIQUES



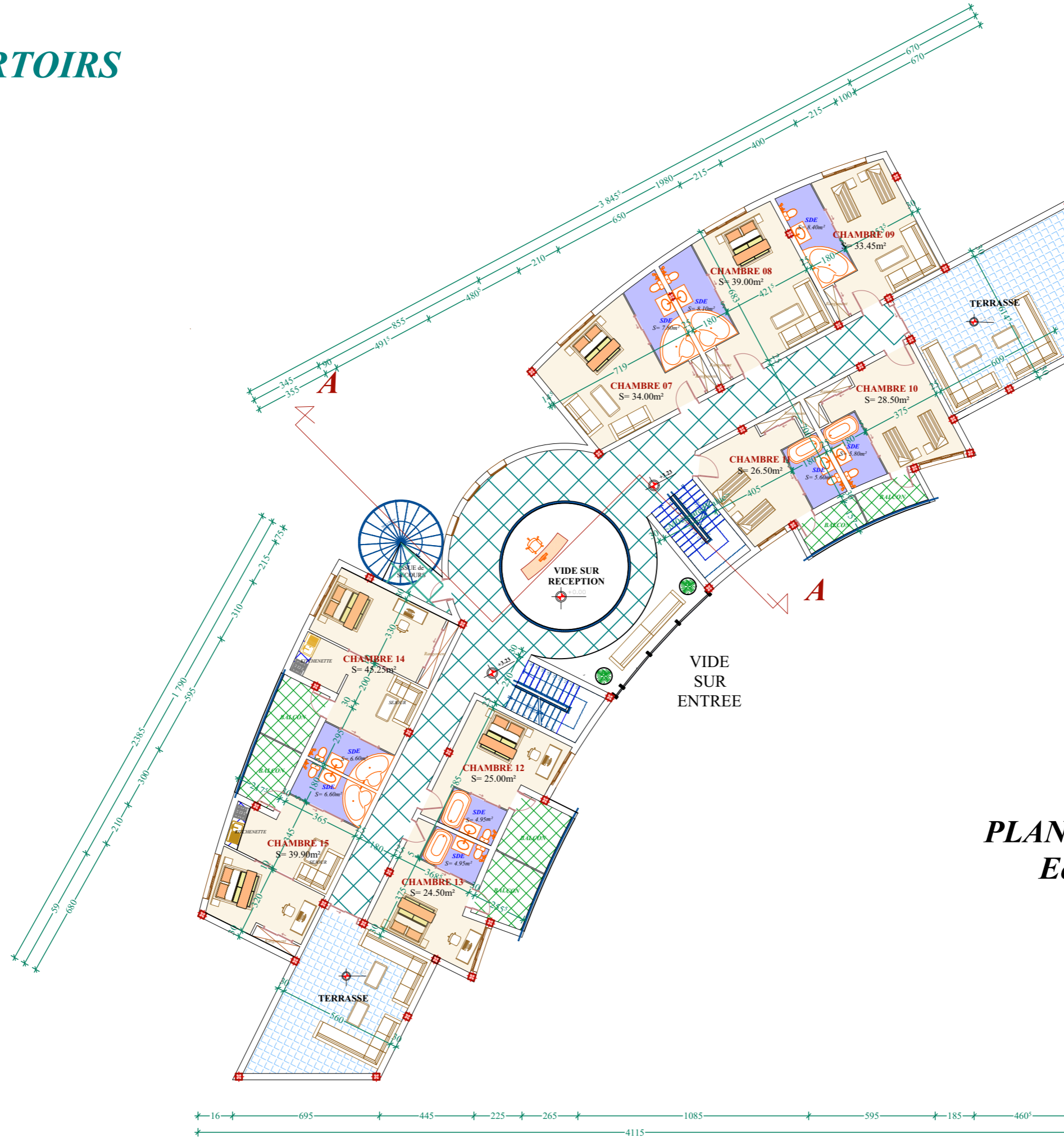
VUE d'ENSEMBLE COTE HEBERGEMENT

PLANS DORTOIRS

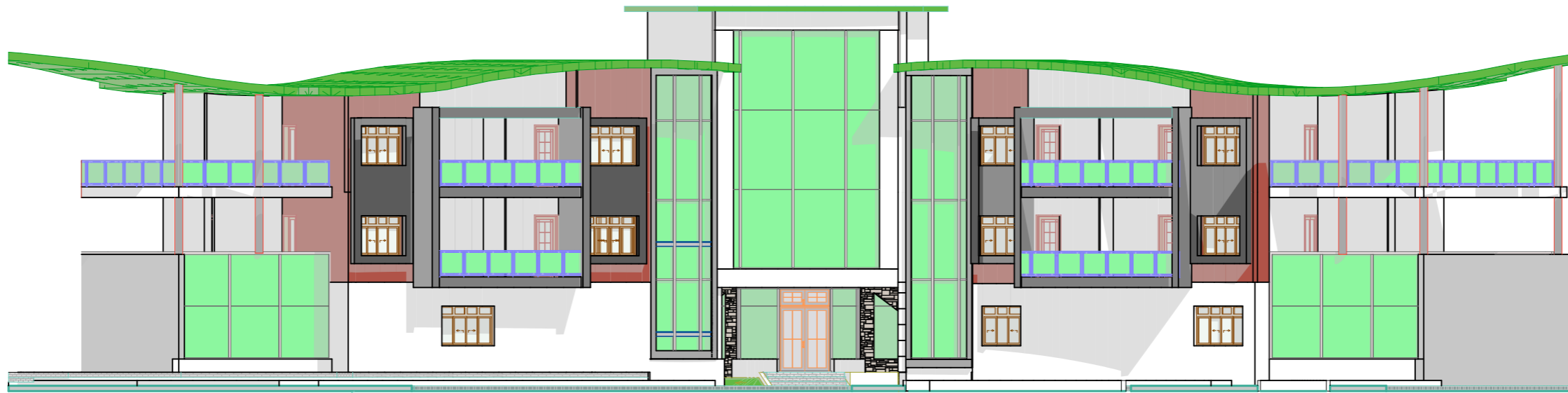


PLAN REZ DE CHAUSSEE
Ech : 1/200

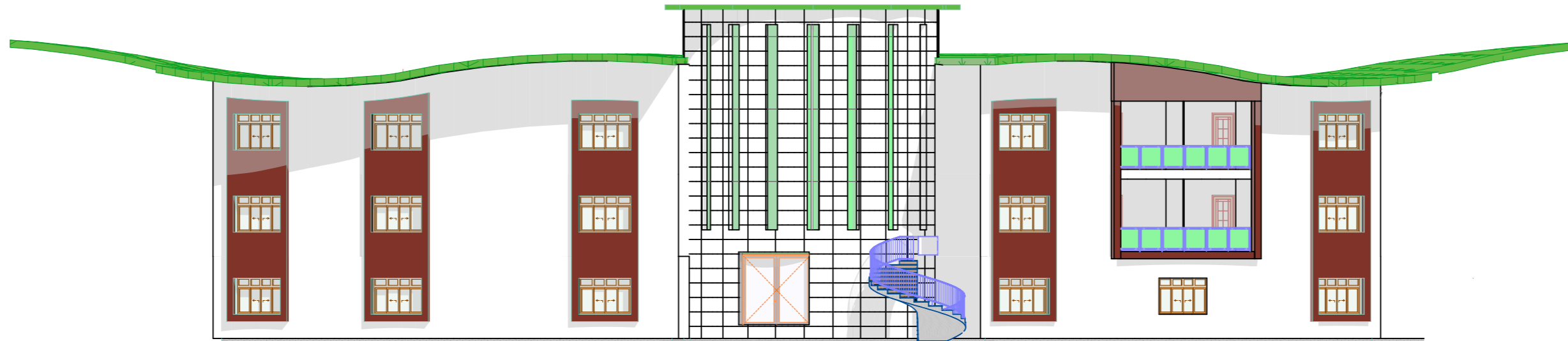
PLANS DORTOIRS



PLAN 1ER ETAGE
Ech : 1/200

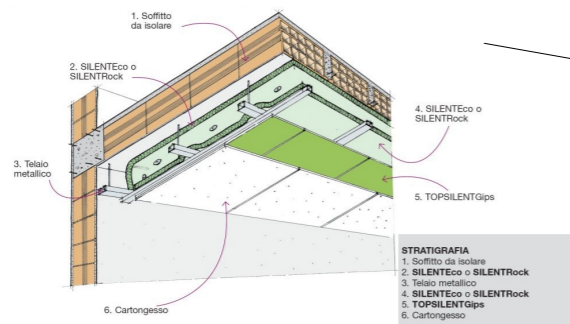


FACADE PRINCIPALE
Ech : 1/200

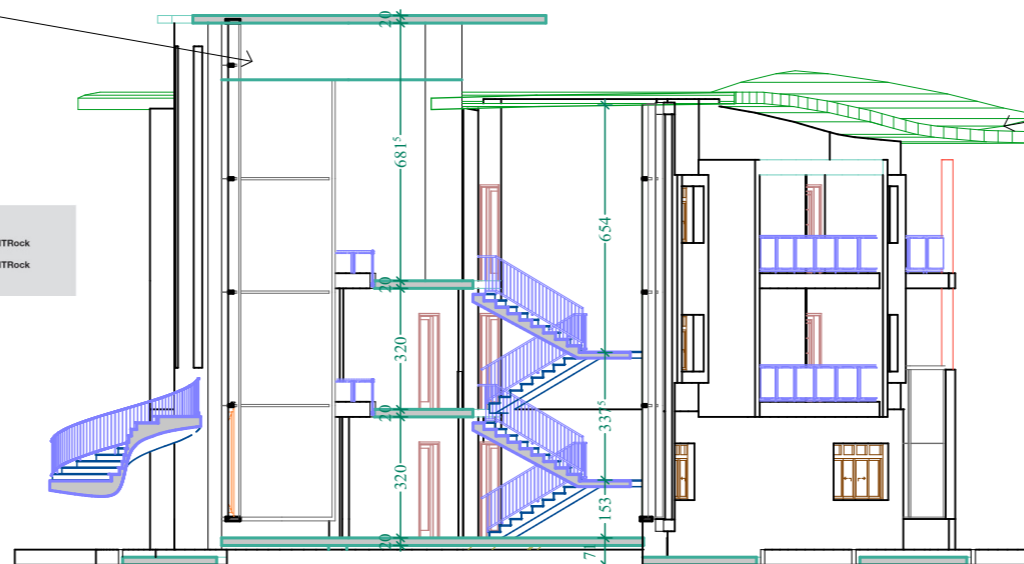
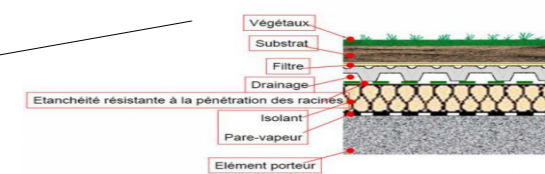


FACADE SECONDAIRE
Ech : 1/200

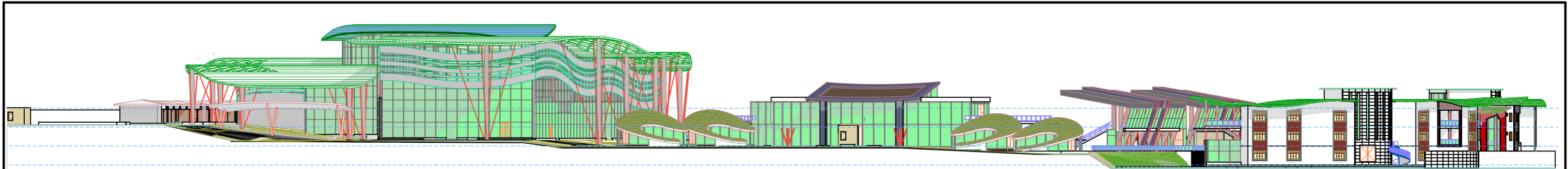
DETAILS FAUX PLAFOND



DETAILS TOITURE VEGETALE

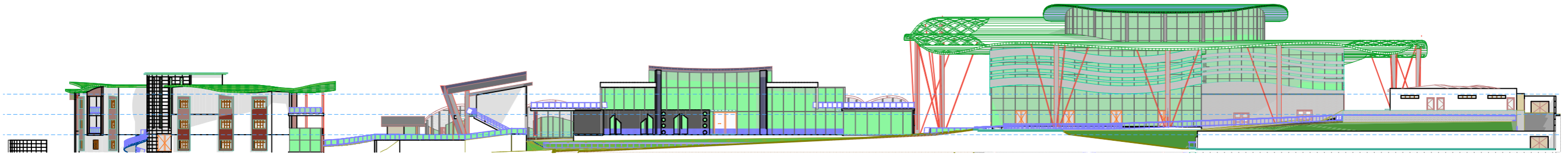


COUPE AA
Ech : 1/200



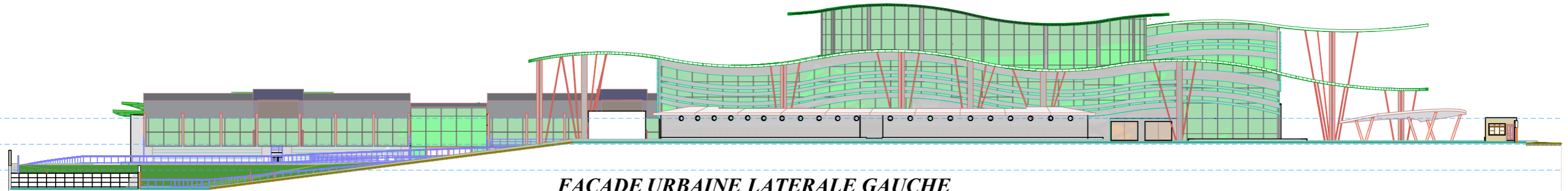
FACADE URBAINE PRINCIPALE

Ech : 1/500



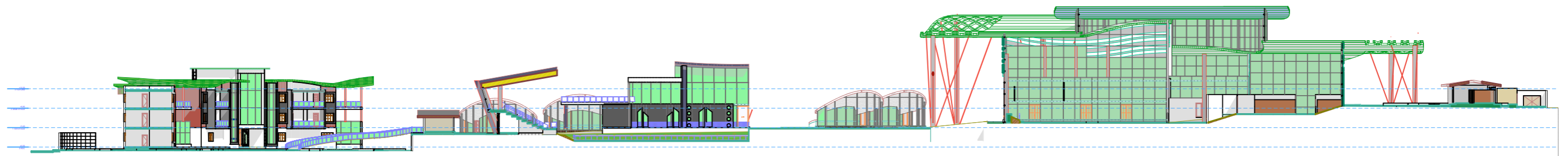
FACADE URBAINE LATERALE

Ech : 1/500



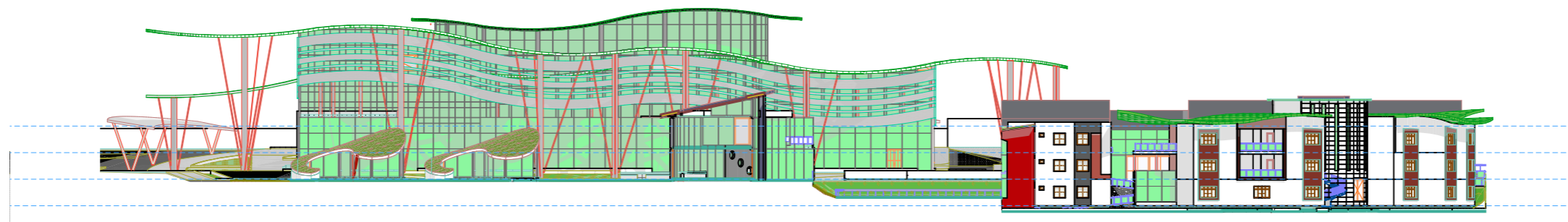
FACADE URBAINE LATERALE GAUCHE

Ech : 1/500



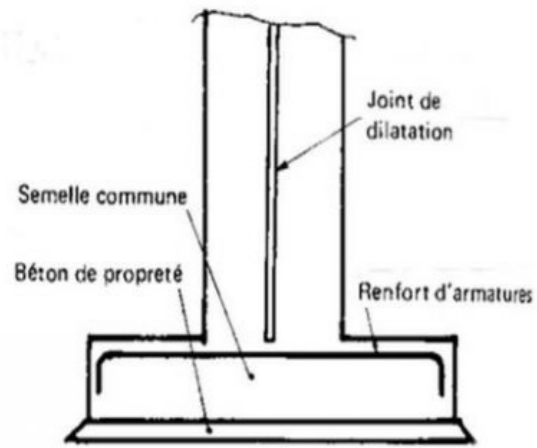
COUPE LONGITUDINALE URBAINE

Ech : 1/500

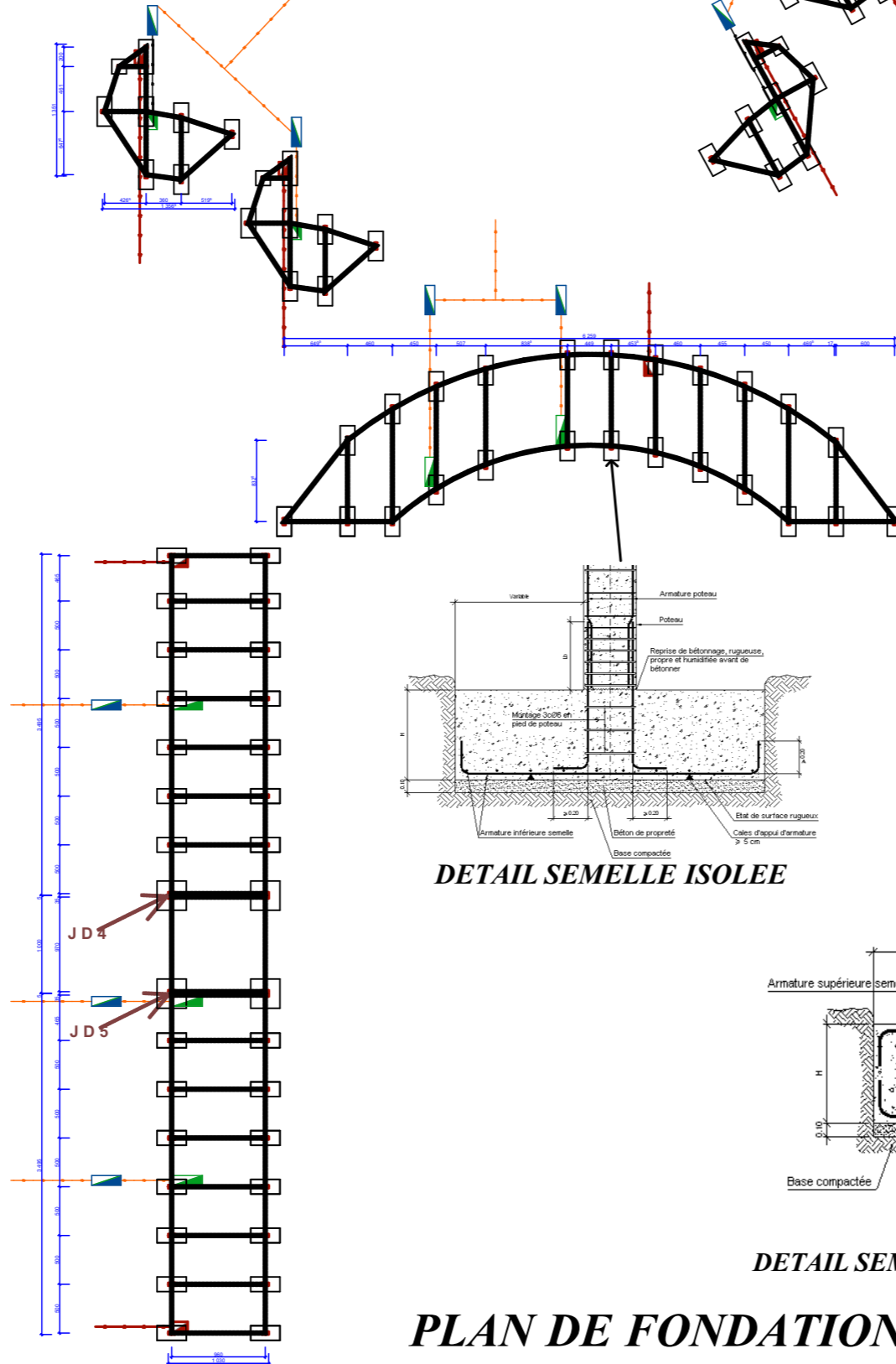
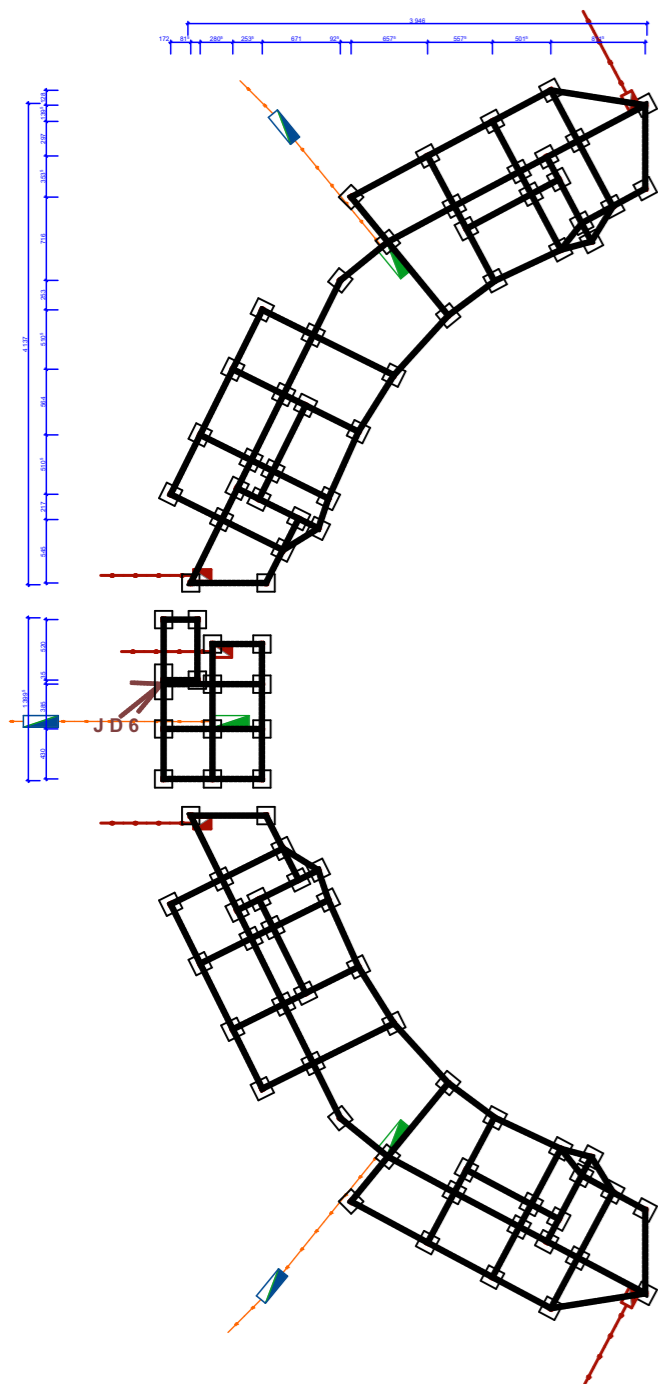


COUPE URBAINE TRANSVERSALE

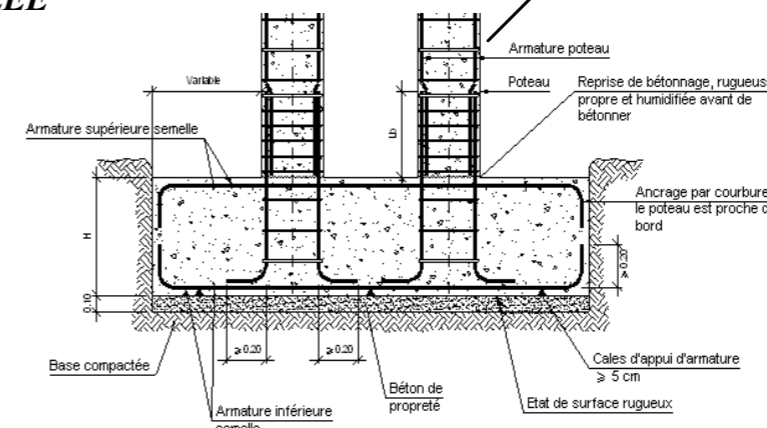
Ech : 1/500



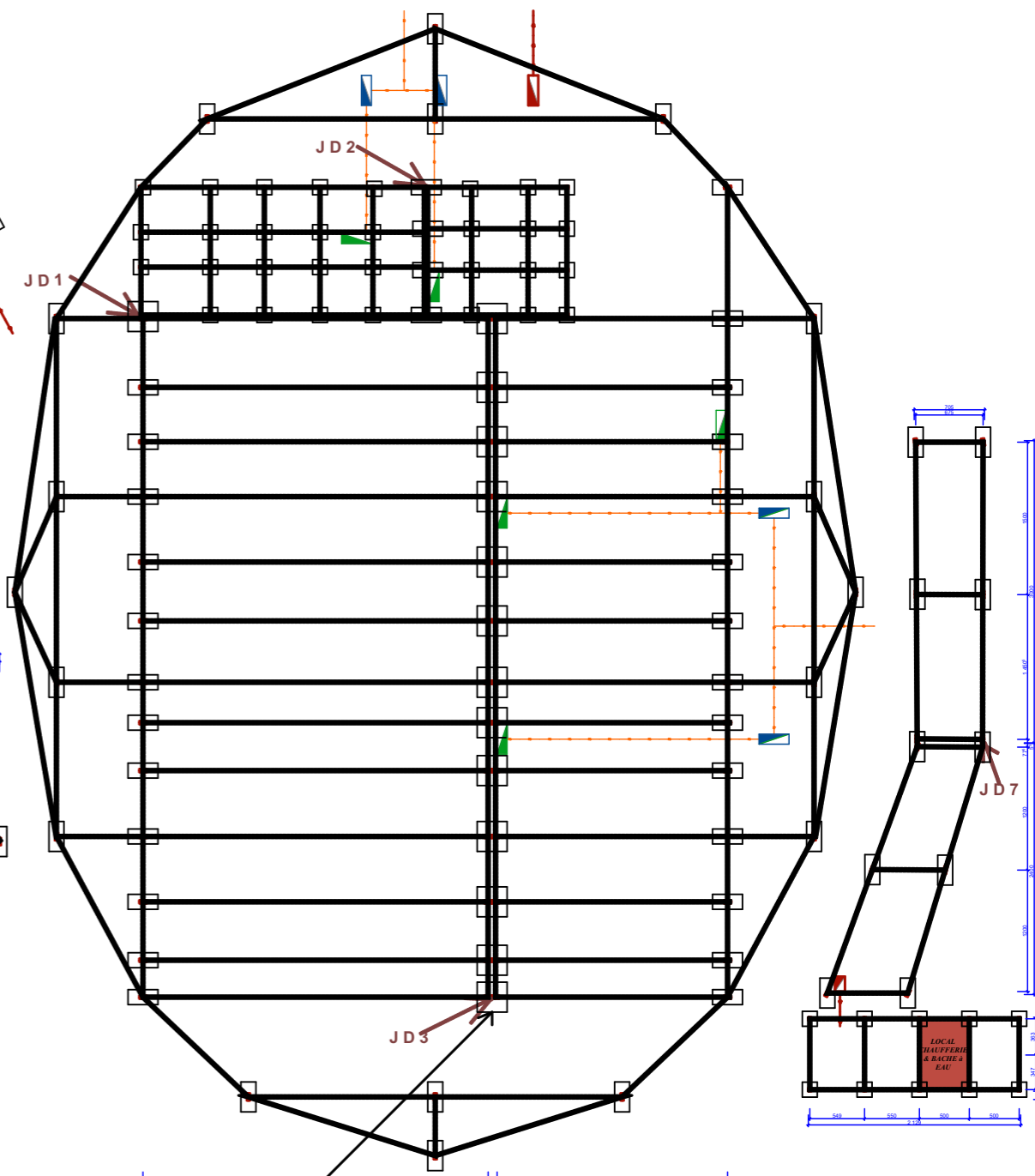
DETAIL JOINT DE DILATATION



DETAIL SEMELLE ISOLEE



DETAIL SEMELLE COMBINEE DE DEUX POTEAUX



PLAN DE FONDATION
Ech : 1/500

SCHÉMA DE GESTION DES ÉNERGIES

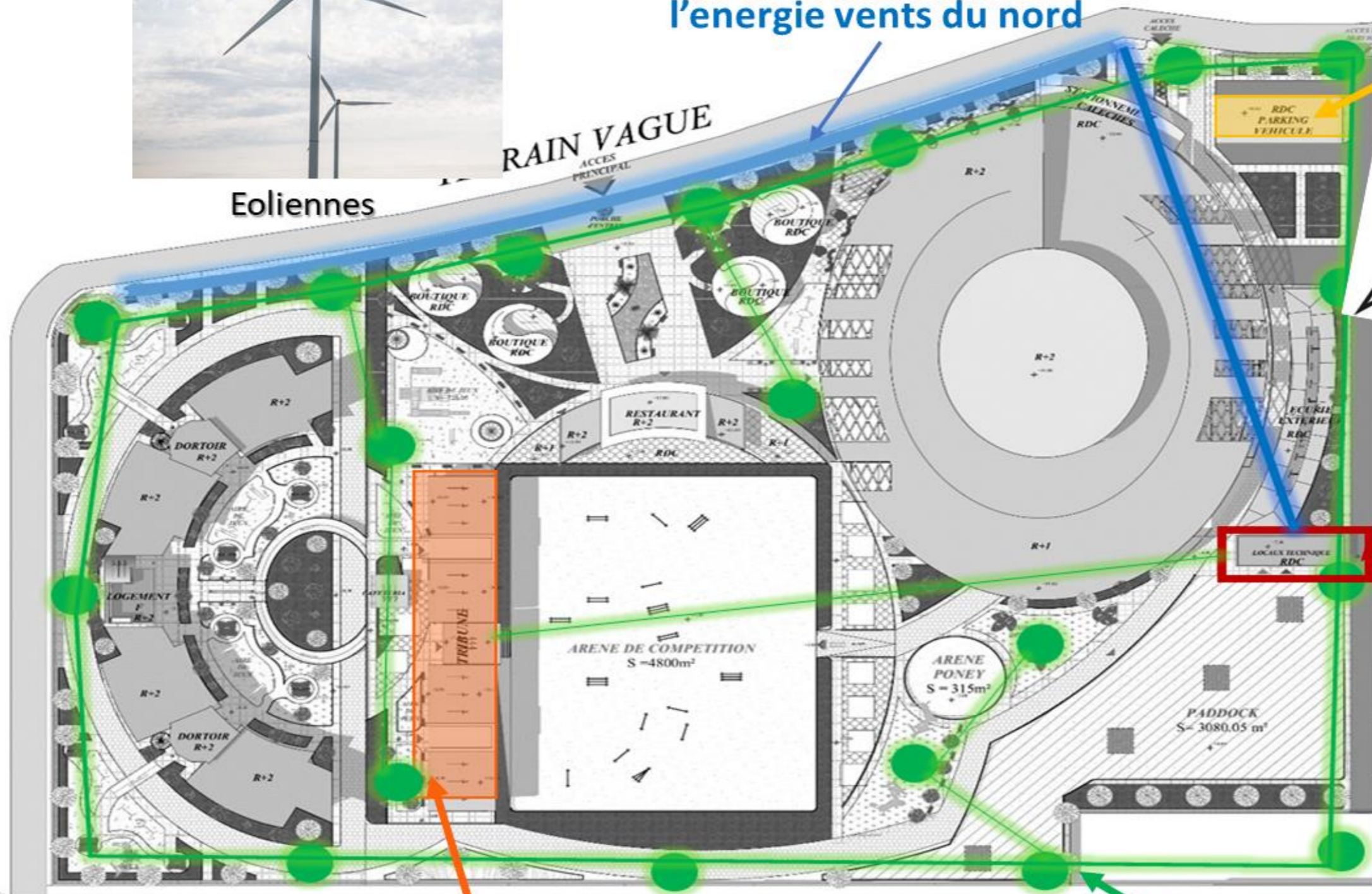


Eoliennes

Installation des éoliennes dans le cote nord du terrain afin de profiter des l'énergie vents du nord



Parking a énergie solaire



Local énergie renouvelable



Lampadaire solaire

Energie solaire par l'installation des panneaux PV

Assurer l'éclairage public par des lampadaires solaires

SCHÉMA DE GESTION DES DECHETS



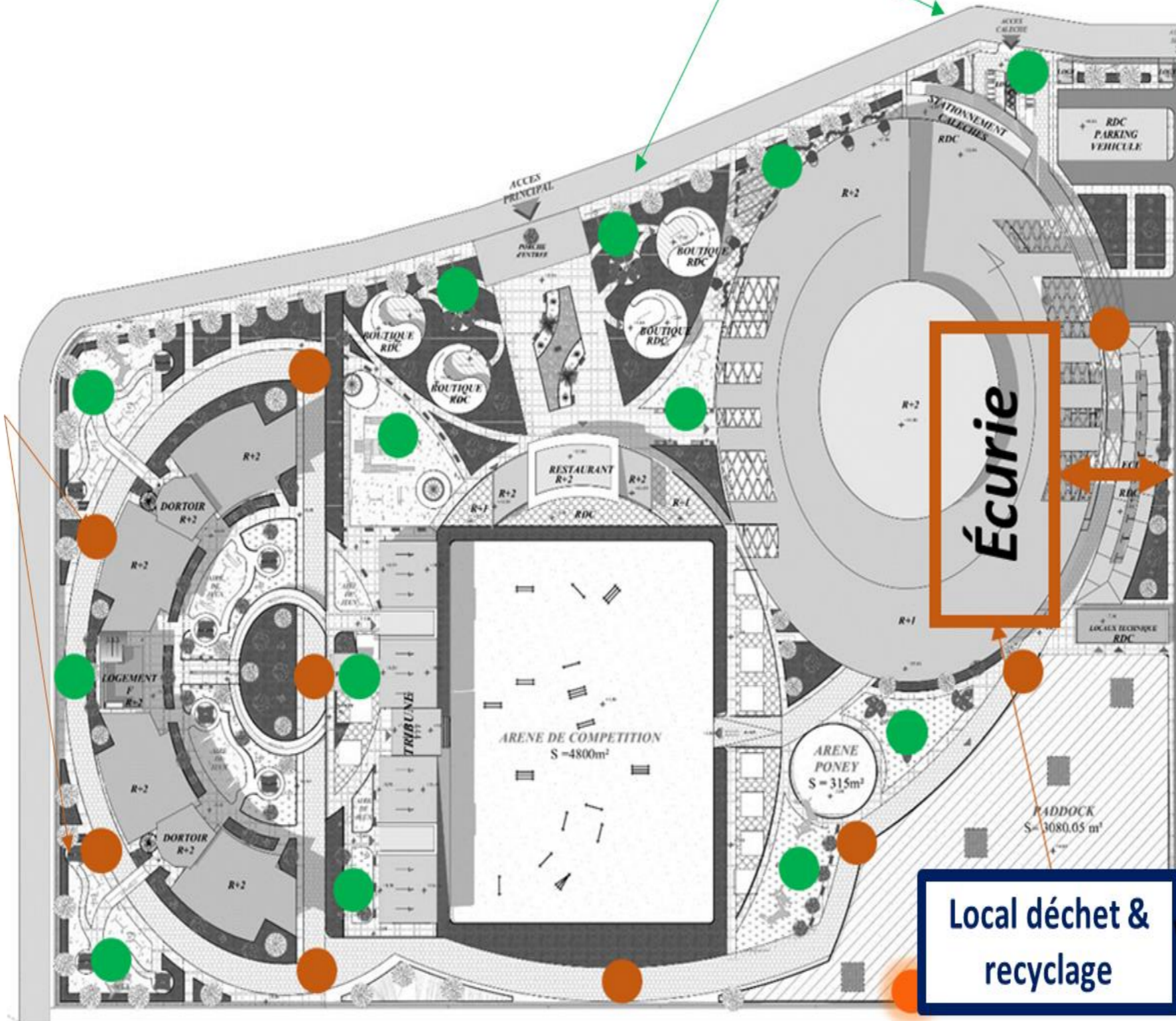
Equipement du projet avec des poubelles à tri sélectif des déchets ménagère dans les espaces publics

Equipement du projet avec de différents appareils de collecte et recyclage du déchets

Equipement du projet avec des poubelles du fumier des chevaux dans les parcours cheval



Poubelle à fumier



Tracteur de collecte



Aspirateur fumier

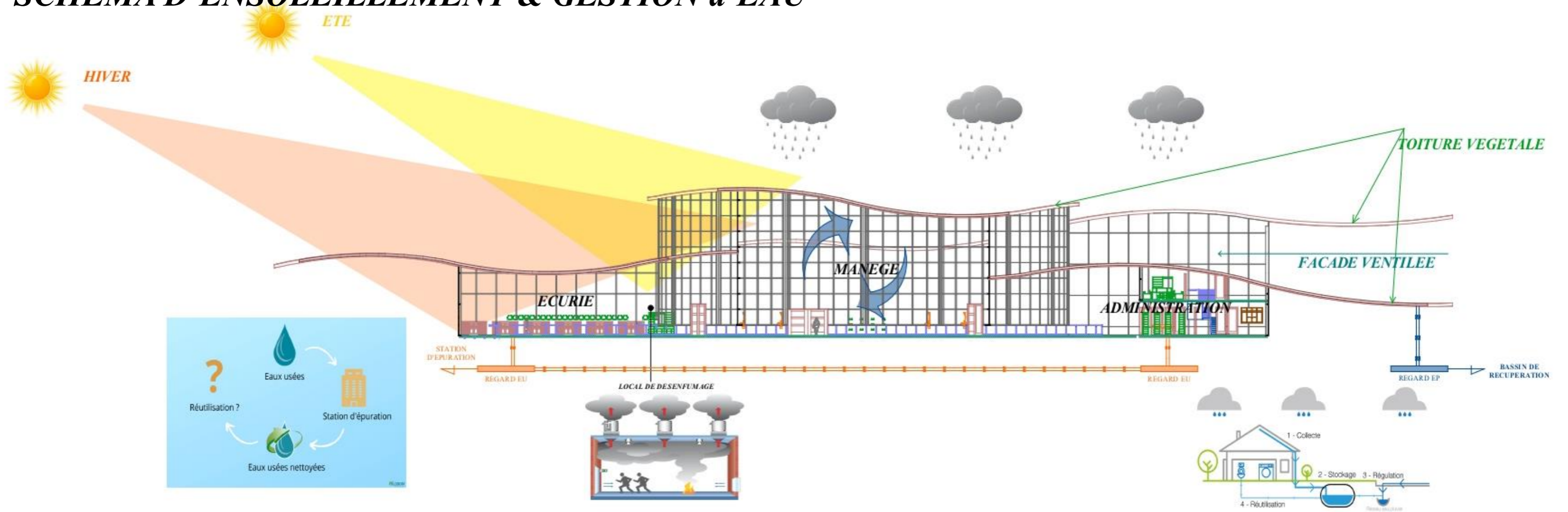


Séparateur fumier

Voie de service

Local déchet & recyclage

SCHÉMA D'ENSOLEILLEMENT & GESTION d'EAU



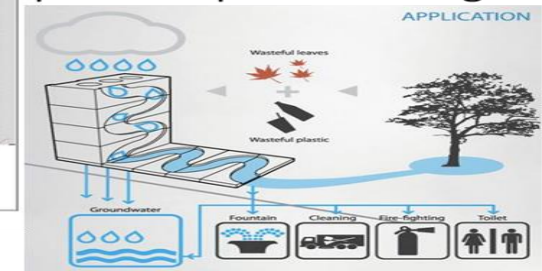
Récupération des eaux pluviales dans un pole aquatique pour chevaux



Récupération des eaux pluviales par des bassin & fontaine décorative



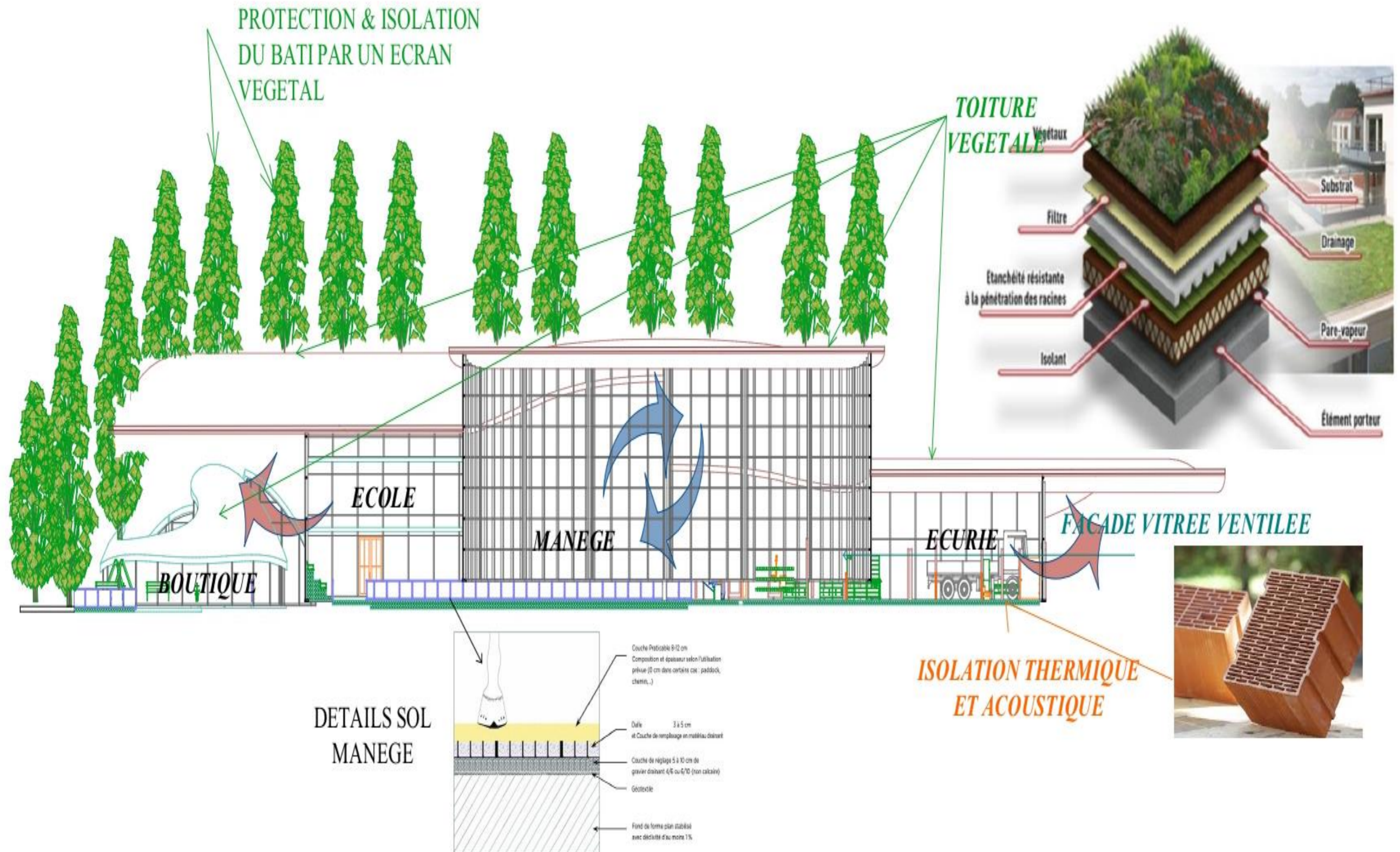
Stockage des eaux pluviales pour l'arrosage

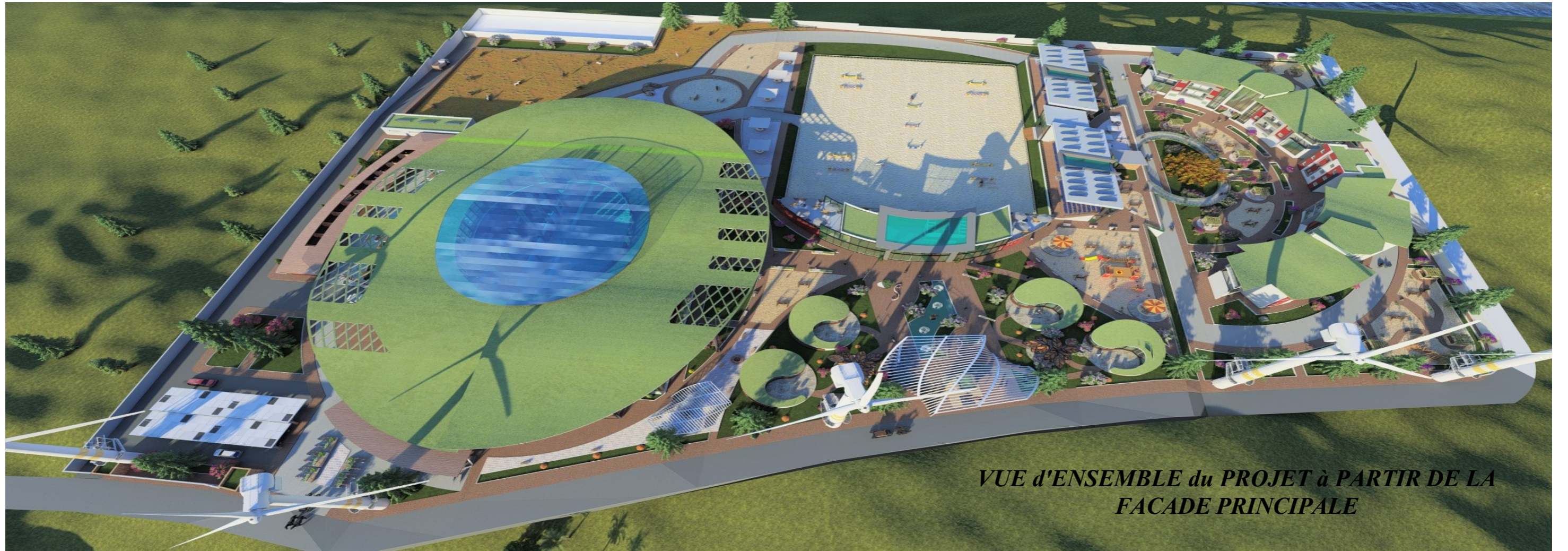


Profiter du Oued pour l'approvisionnement en eau potable

OUED ANSAR EL MALEH

SCHÉMA DE VENTILLATION & ISOLATION





VUE d'ENSEMBLE du PROJET à PARTIR DE LA FACADE PRINCIPALE



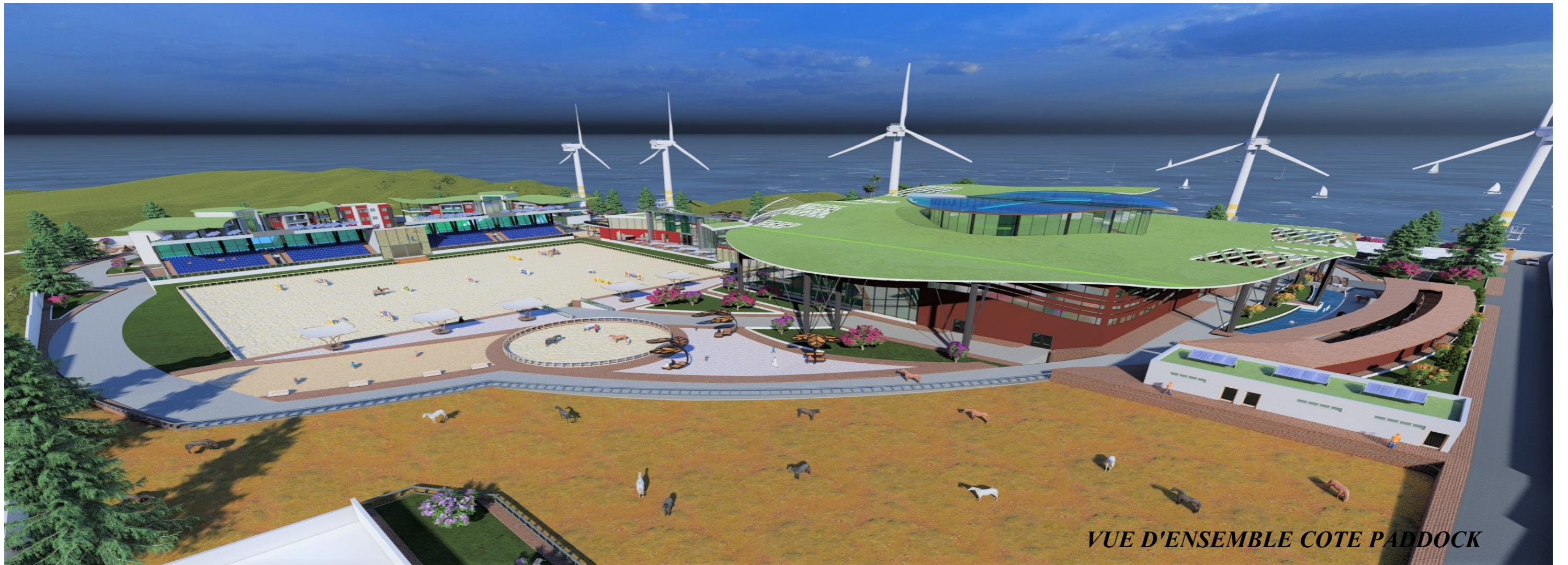
VUE SUR FACADE PRINCIPALE



VUE SUR ACCES PRINCIPALE DU PROJET



VUE SUR ACCES CALECHES

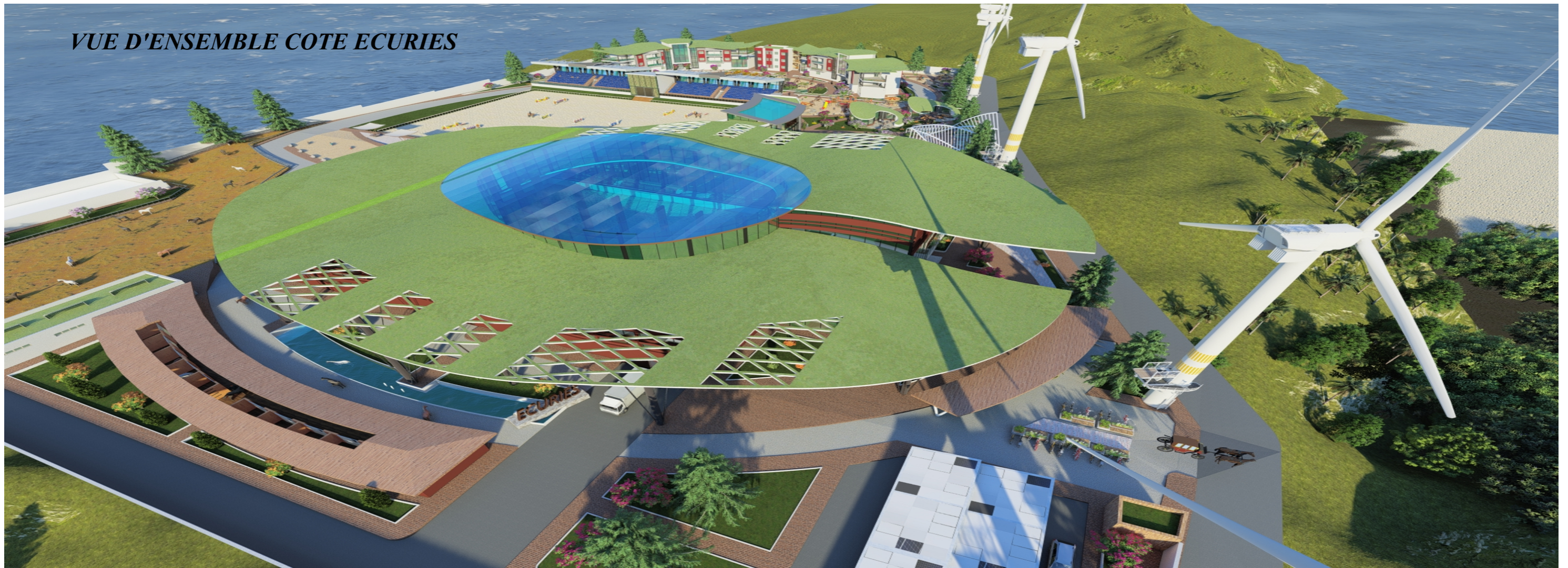


VUE D'ENSEMBLE COTE Paddock



VUE D'ENSEMBLE COTE HEBERGEMENT

VUE D'ENSEMBLE COTE ECURIES



VUE SUR LA FACADE LATERALE GAUCHE



VUE SUR LES ECURIES



*VUE SUR RESTAURANT à PARTIR de
L'ENTREE PRINCIPALE*



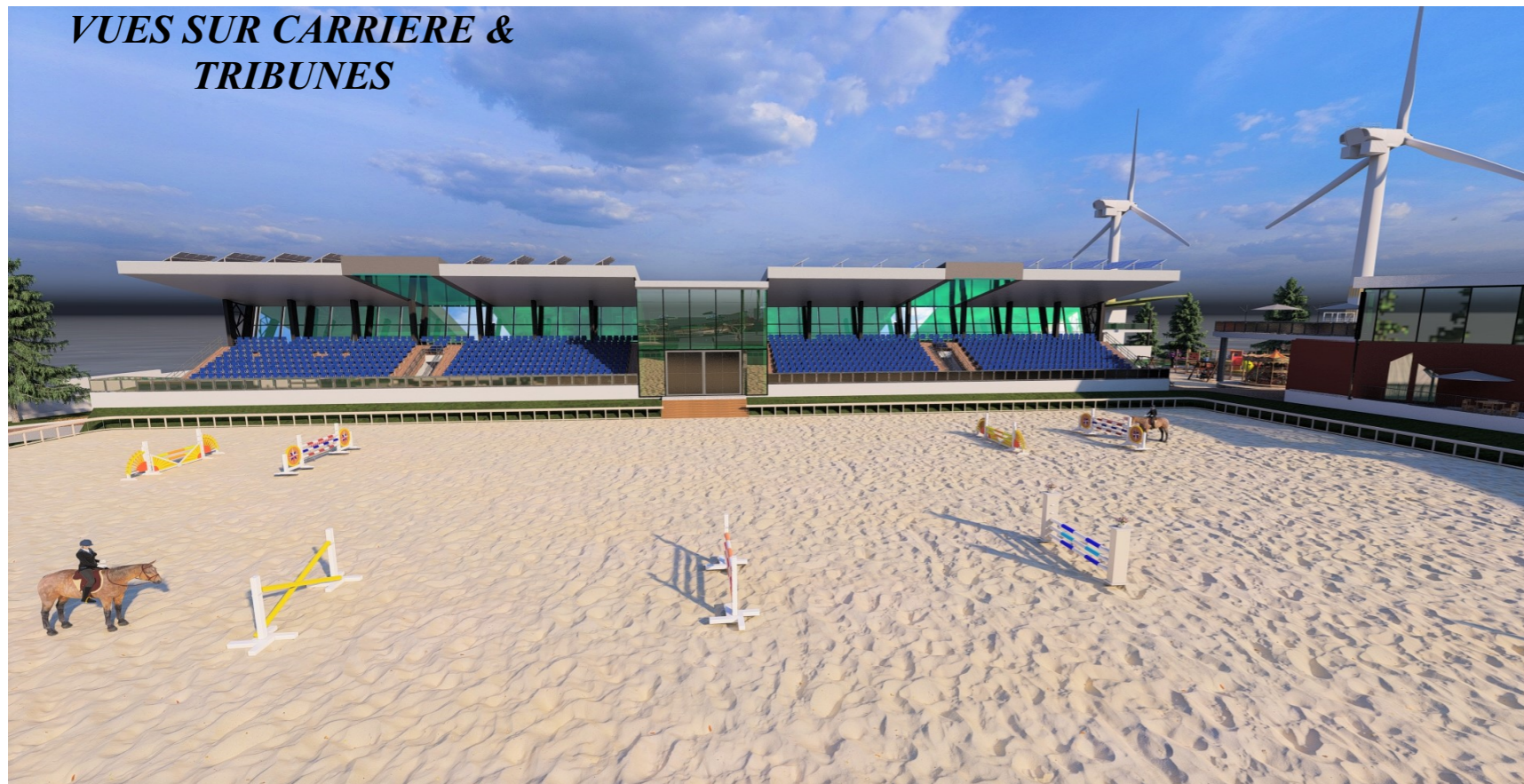
VUES SUR RESTAURANT COTE CARRIERE



VUE SUR LA FACADE PRINCIPALE DES TRIBUNES



VUES SUR CARRIERE & TRIBUNES



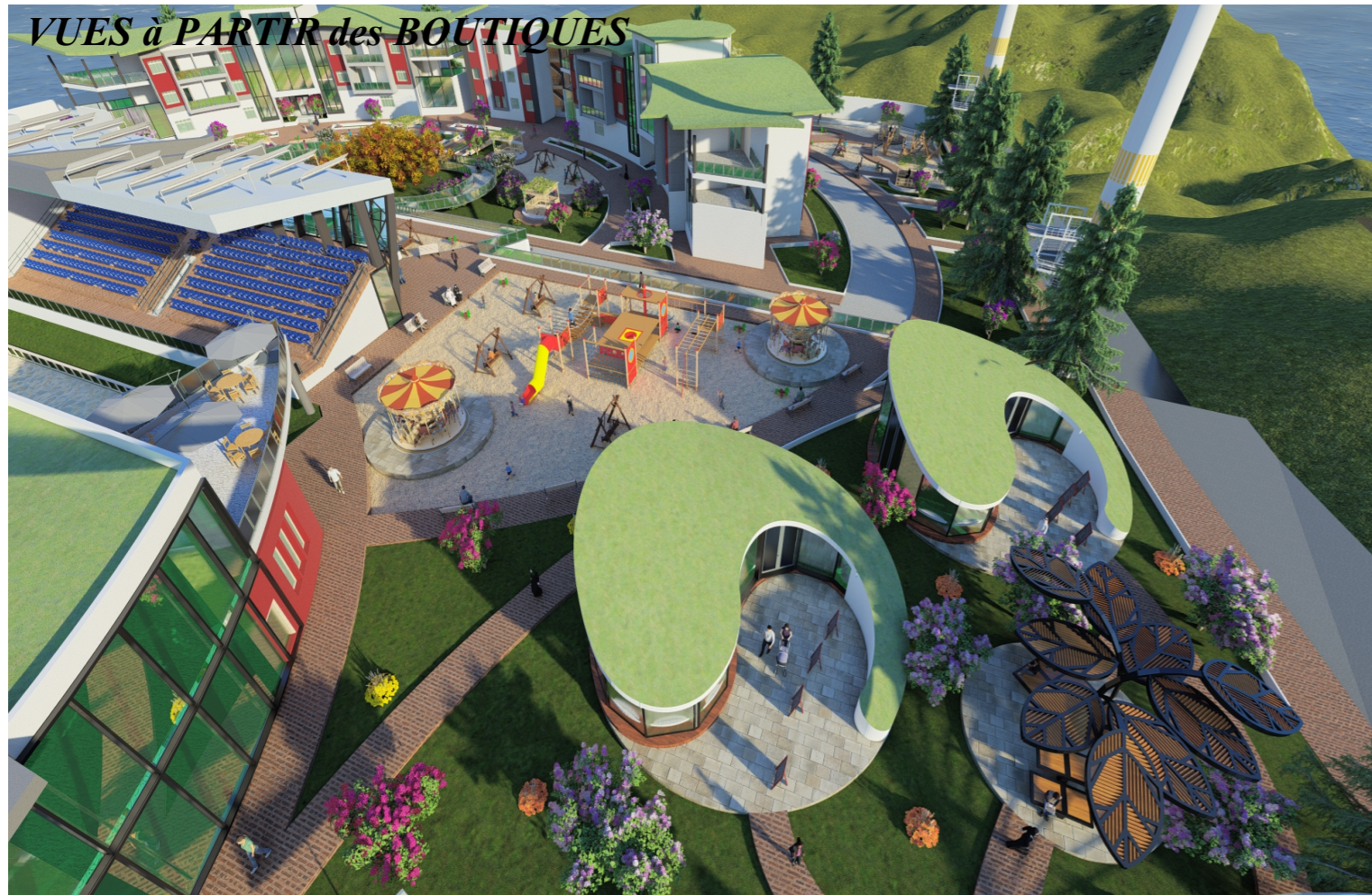
VUES SUR CARRIERE à PARTIR des TRIBUNES



**VUE SUR LA FACADE PRINCIPALE DES
HEBERGEMENTS**



VUES à PARTIR des BOUTIQUES



VUES SUR BOUTIQUES & AIRE DE JEUX



*VUE SUR AIRE DE DETENTE COTE
DORTOIRS*



VUES d'INTERIEUR ECURIE

